

增量型实心轴编码器 INCREMENTAL SHAFT ENCODER

外径 $\Phi 24$ EXTERNAL DIAMETER $\Phi 24$

特点 FEATURES

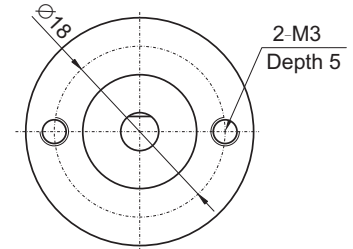
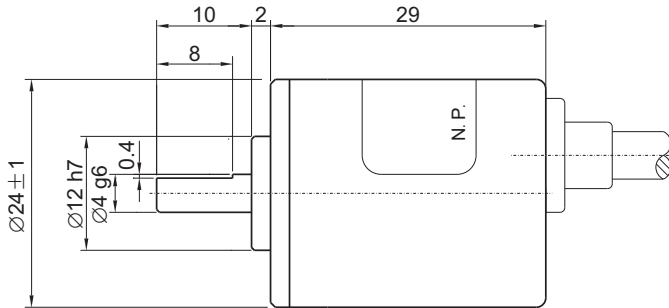
- Max.diameter $\Phi 24\text{mm}$
- 超小型外径仅24mm
- High anti-interference
- 高抗干扰性能

用途 APPLICATION

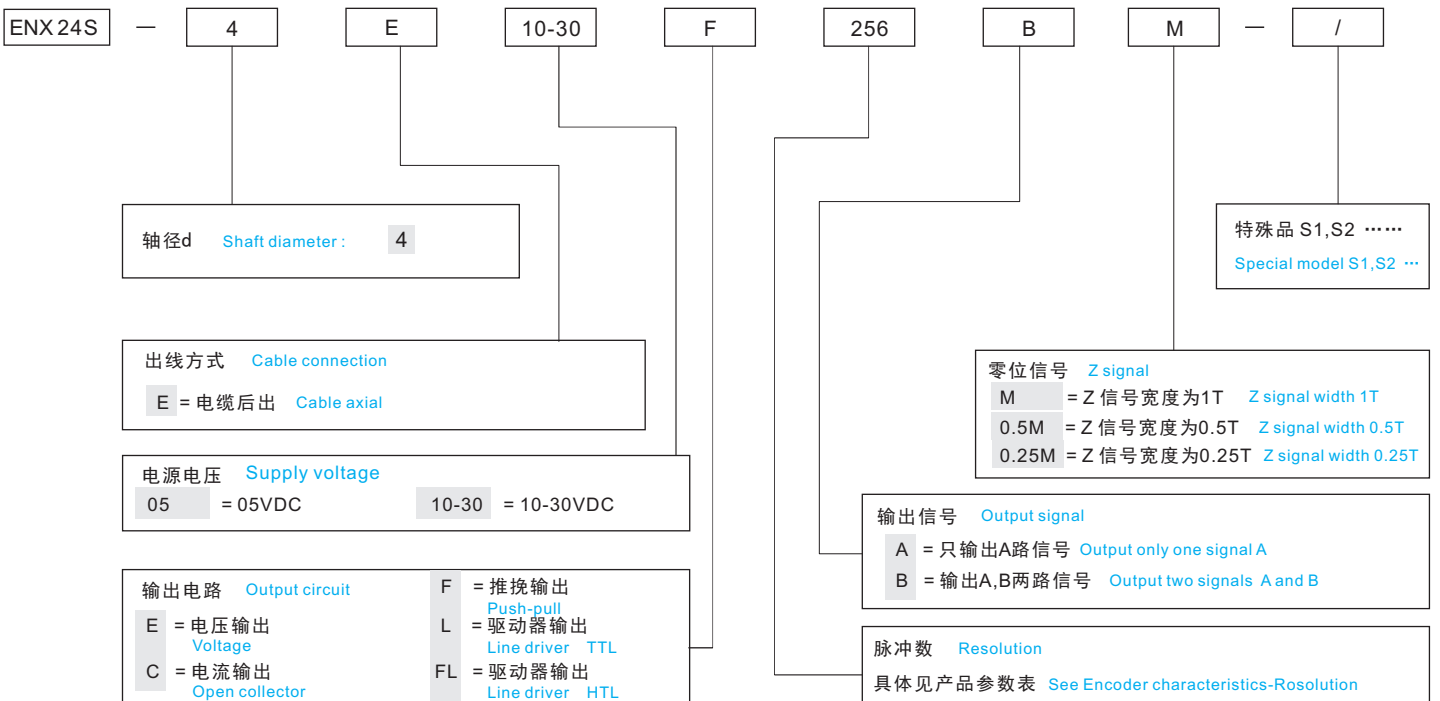
- Automation
- 自动化
- Industrial machine
- 工业设备



ENX24S



订货说明 ORDERING INFORMATION



▲没有的项目不标注! No marked for not exist items!

产品参数 Encoder characteristics

型号	Type	ENX 24S				
机械参数 Machine characteristics						
最大转速	Max. speed(min ⁻¹)	6000r/min				
防护等级	Protection rating	IP50				
启动力矩	Starting torque	3x10 ⁻⁴ N.m Max..				
重量	Weight	0.05Kg (Without cable)				
最大径向负载	Max.shaft load radial	10N				
最大轴向负载	Max.shaft load axial	5N				
抗冲击	Shock resistance	1000m/s ² ,6ms				
抗振动	Vibration resistance	100m/s ² ,10...200Hz				
电气参数 Electrical characteristics						
输出电路 ¹⁾	Output circuit	C	E	F	L	FL
电源电压	Supply voltage	5±0.25VDC,10-30VDC			5±0.25VDC	10-30VDC
消耗电流	Current consumption	80mA			150mA max.	
上升时间	Rise time t _r	1us		200ns	100ns	
下降时间	Fall time t _f	1us		200ns	100ns	
允许负载/通道	Permissible load/channel	Max. 30mA			Max. 20mA	
信号高电平	Single level high	Min.Vcc*70%			Vcc≥ 2.5V	Min.Vcc*70%
信号低电平	Single level low	Max.0.5V		Max.1V	Max.0.5V	
其他参数 Other characteristics						
工作温度 ²⁾	Operating temp.	-10°C...+70°C		-20°C...+85°C		
贮存温度	Operating temp.	-20°C...+80°C		-25°C...+100°C		
最高响应频率	Max. Output frequency	100KHz	100KHz	200KHz	400KHz	800KHz
脉冲数 P/R ³⁾	Resolution P/R	1~360	50,100,125,128,200 256,500,512	600,750,800,900,1000 1080,1200,1500	1200,1500,1600,1800 2000,2160,2400,3000	2400,3000,3200,3600 4000,4096,4800,6000

1) 详细电路见 P10 1.3 See detailed circuit P10 1.3
输出波形见 P10~12 1.4 See output waveform P10~12 1.4

2) -40°C...+100°C 可定制! -40°C...+100°C can be customized!

3) 特殊脉冲数定做, 请咨询工厂。
Special Resolution , when you order it, please consult the factory.

接线表 CONNECTION TABLE

E

输出电路形式 Output circuit	线色 Color	白 White	黑 Black	红 Red	绿 Green	黄 Yellow	粉 Pink	蓝 Blue	橙 Orange	屏蔽 Shield
C,E,F	信号 Signal	Vcc	0V	A	B	Z	-	-	-	- 1)
L,FL	信号 Signal	Vcc	0V	A	B	Z	A\	B\	Z\	- 1)

*1: G: 屏蔽接壳;
Cable shield connect to the cover;
CG: 壳与0V间接0.01u/630V, 屏蔽接壳;
Between the cover and 0V connect 0.01u/630V,cable shield connect the cover;
- : 屏蔽不接壳。
Cable shield don't connect the cover.